



# PRODUCT DATA

# Airspace Policy Management

**TAKE CONTROL OF YOUR AIRSPACE BY ESTABLISHING POLICIES, THEN MANAGE & MAINTAIN AGAINST THEM FOR THE EFFICIENT AND PRODUCTIVE USE OF WIRELESS**



THE PROLIFERATION OF WIRELESS DEPLOYMENTS AND THE WIDE RANGE OF PUBLIC AND PRIVATE WIRELESS SERVICES AVAILABLE TO USERS PRESENTS MANY ORGANISATIONS WITH THE INCREASINGLY COMPLEX PROBLEM OF WIRELESS MANAGEMENT. RED-M'S AIRSPACE POLICY MANAGEMENT (APM) SERVICE IS THE ONLY WAY TO ACHIEVE CONTROL, ELIMINATE RISK AND MAINTAIN OPTIMUM WIRELESS OPERATION.

### WHY DO YOU NEED APM?

Red-M has seen wireless networks create many positive benefits - but without firm control, wireless can also create problems:

- A supermarket had all its wireless barcode readers suddenly stop working at peak time
- In a shopping centre car park, an MPV's central locking system was jammed by unauthorised wireless signals - and couldn't be unlocked
- A department store's wireless network was hacked from outside the store in an attempt to steal customers' credit card information

What are you doing to prevent similar occurrences? Is doing nothing really an option? You need to take control.

### WHAT ARE THE BENEFITS OF APM?

Airspace Policy Management from Red-M will deliver significant benefits to your business:

- **Maintain Total Control** of all key wireless operations, systems and parameters to achieve:
  - Minimum interference
  - Optimum performance
  - Defined change control process
  - Informed decision-making
  - Effective upgrade planning
- **Ensure Ongoing Compliance** with regulatory standards and industry best practice
- **Integrated Management** of your in-building wireless assets and third party systems

### THE PHASES OF RED-M APM

#### 1. SETUP:

- Discovery audit and survey
- Create database of systems in use
- Establish wireless policies
- Document the approvals process
- Communicate process

#### 2. ONGOING MANAGEMENT:

- Policy management
- Approvals against policies
  - Interference
  - Security
  - Health & Safety
  - Usage
- Regular audits to ensure compliance

#### AND:

- Periodic review of policies
- Extend APM to new technologies

## WHAT ARE THE DELIVERABLES OF THE RED-M APM SERVICE?

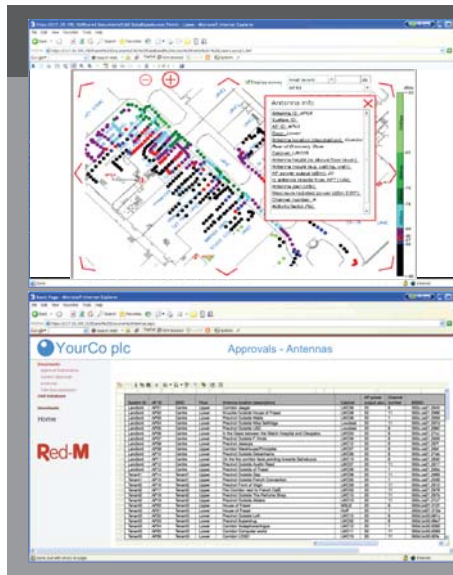
APM is a comprehensive service, based on our in-depth wireless skills and knowledge and delivered via everyday office tools, that provides you with pro-active, ongoing operation plus detailed management information. Based on our approach, APM delivers:

### SETUP

- **CAD-based Database** - overlaid on CAD building plans, showing location and parameters of wireless systems
- **RF Health & Safety Policy** - enabling compliance with H&S standards and regulatory best practice guidelines
- **Operations Policy** - defined for your needs and taking into account existing policies; published in a form easily communicated to, and used by, management, users and third parties
- **Approvals Process** - fully documented to ensure capture of all applicant requirements and to highlight exposure to any potential risks for your business
- **Guide to Application** - a clear explanation of the APM process, its aims and rationale, and the benefits of policy adoption

### ONGOING MANAGEMENT

- **Approvals Management** - Red-M will provide a detailed and documented approvals process to include:
  - Receiving requests to install new wireless systems
    - Intended purpose, plus scope of request for approval
    - Power & channel settings, antenna types & locations



## THE RED-M APM PORTAL - MANAGE YOUR AIRSPACE ONLINE

Red-M has developed a highly effective interactive airspace management tool in the form of a powerful web-based portal that gives you 24/7 access to:

- System locations and details
- APM policies and processes
- Airspace Approval Notices
- Audit Reports
- Interactive display of antenna parameters and audit data

This service enables you to achieve unparalleled levels of control and operations monitoring, delivering information on:

- Policy non-compliance
- Unauthorised systems
- Network outages

With Red-M's APM, you are always in control of your airspace and wireless assets.

- **Analysis of proposed system**
  - Likely coverage & interference areas
  - Impact on existing systems
  - Compliance with Health & Safety and other policies
- **Issue of an Airspace Approval Notice & associated conditions**
  - Channel, power & antenna settings
- **Record details onto CAD database**
- **Analysis of post-implementation test results to ensure compliance with original application**
- **RF Audit** - to ensure system integrity a regular review of approved systems will be carried out in order to identify:
  - Approved systems operating outside of approval conditions
  - Rogue systems installed and operating outside the approvals process
  - Any recommended and/or corrective actions to be taken
- **RF Health & Safety** - compliance with regulatory policies is audited to a regular

schedule and includes:

- Documentation and certification of compliance with relevant standards
- Recommendations on corrective action where required
- Ongoing advice on meeting existing and forthcoming legislation

### OTHER ASPECTS

- **Periodic Review of Policies** - to ensure that your system requirements are being met
- **Extend APM Scope** - to include new technologies as needed, such as:
  - Low Power GSM
  - WiMAX

Red-M's APM is designed to embrace every aspect of your wireless infrastructure and places the control of an extremely valuable asset in safe, expert and pro-active hands.

Independent of equipment vendors and technologies, Red-M enables organisations to fully realise the benefits of wireless systems by delivering high quality solutions through an integrated, five-step cycle of best practice:

#### 1. CONSULTING

Defining exactly how, when and where wireless will be used.

#### 2. AUDIT

Understanding what is happening and developing a design baseline.

#### 3. DESIGN

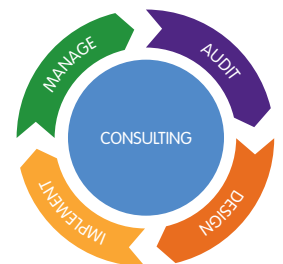
Optimum wireless performance from a design that works right, first time.

#### 4. IMPLEMENT

A non-disruptive installation using best-of-breed technologies.

#### 5. MANAGE

Maintaining a healthy network that continues to meet your needs.



#### CORPORATE OFFICES

Graylands, Langhurstwood Road, Horsham, West Sussex, RH12 4QD, UK  
t: +44 (0) 1403 211100 f: +44 (0) 1403 248597

For more information visit [www.red-m.com](http://www.red-m.com) or email [info@red-m.com](mailto:info@red-m.com)

DOC.REF: MAN-APM-1107:4

# Red-M

when wireless matters™